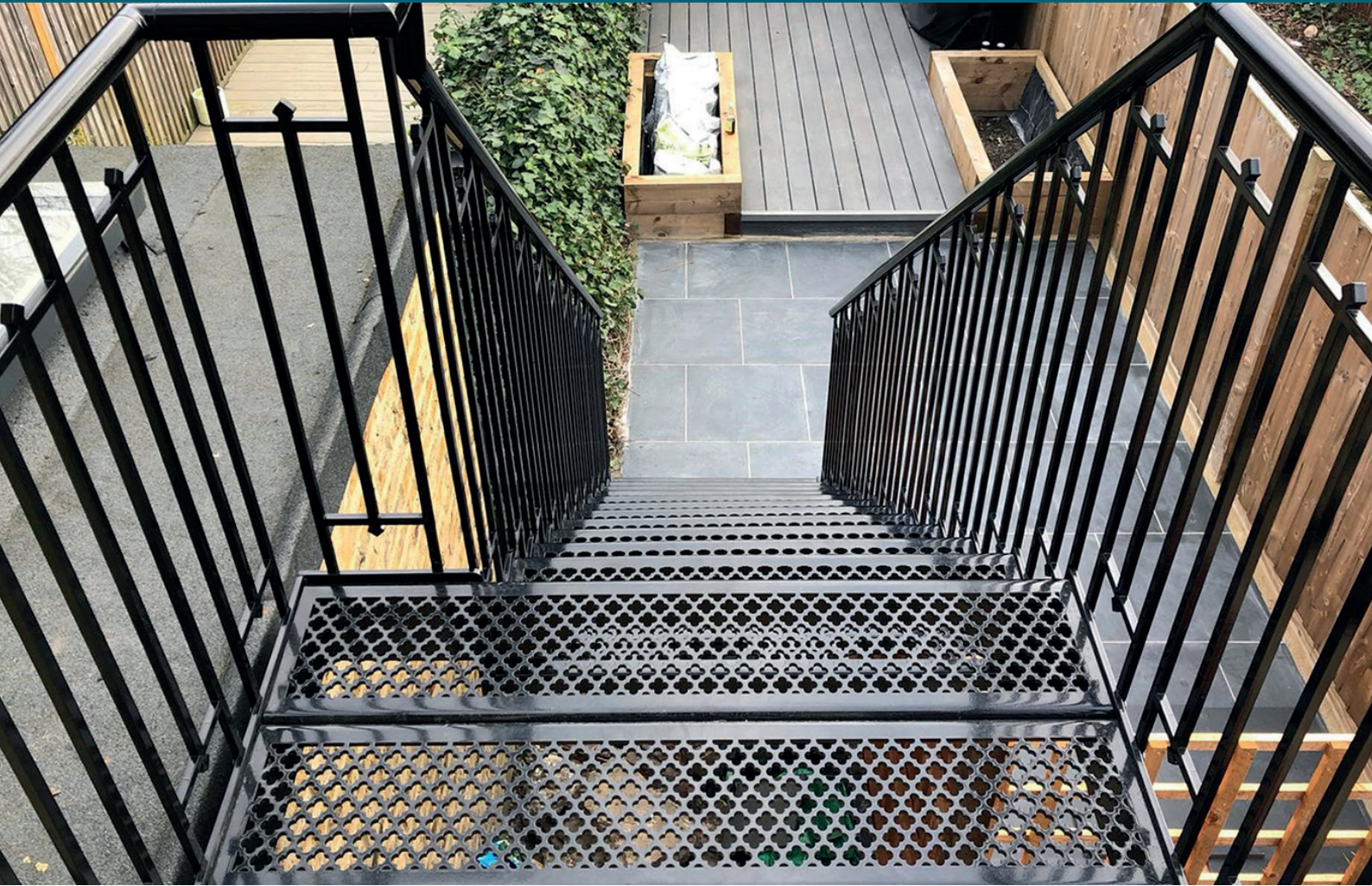


Creative External Staircases

UK Creative Castings
Your complete staircase service



Bespoke design staircase (above) and decking (below).

External staircase design has always been limited by the lack of available attractive, versatile components. Traditional cast treads and decking plates are limited in the number of designs, range of sizes available and they tend to be expensive with long manufacture times.

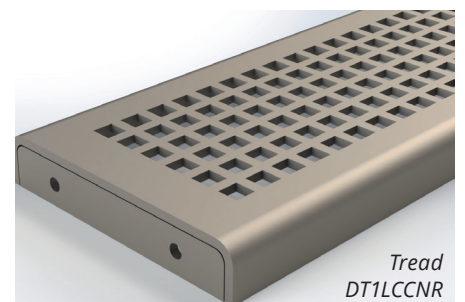
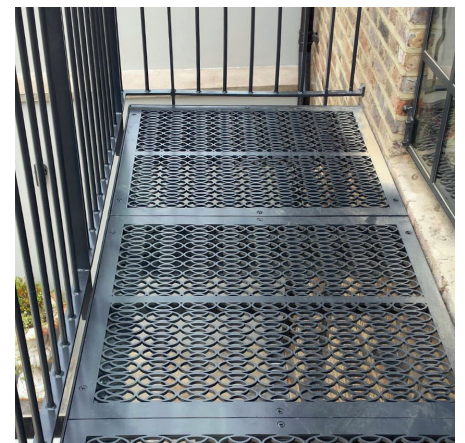
Creative Castings has designed a staircase that is totally versatile in design, shape and size.

We utilise standardised components, dedicated CAD drawing software and a super-fast laser cutting machine.

Our staircases arrive ready to assemble - simply weld in the tread end plates and the two halves of the strings together.

Our staff have over 40 years' experience in the design, manufacture and supply of bespoke staircases and we offer a components supply-only service or we can design and supply the complete staircase.

See the next page for further product details and contact us now about your external staircase project - we'll be happy to help.



*Tread
DT1LCCNR*

Creative External Staircases

UK Creative Castings
Your complete staircase service

THE STAIRCASE

Staircase components are normally supplied in a 6mm or 8mm thickness. 10mm and 12mm thicknesses are also available.

1 Quatrefoil design treads and decking plates

All designs can be supplied in any size and shape. We also provide a bespoke design service to your own specifications.

2 Treads

Supplied with or without riser plates.

3 Decking Plates

Supplied with or without the decorative edge pattern. The solid edge is useful where balustrade fixings are required. Folded edges are available.

4 Strings

Cut to any style.

5 Balusters

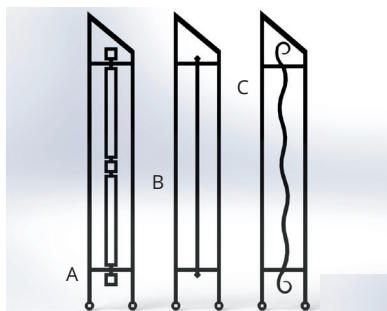
The internal design can be altered to suit your requirements.

6 Handrails

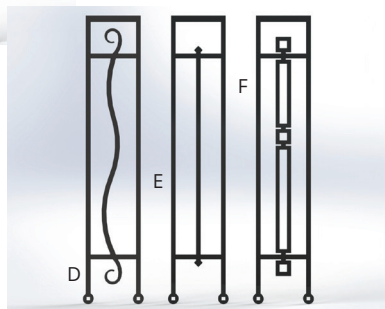
Our system uses 42mm stainless grooved handrails with no drilling or welding required.

7 Finishes

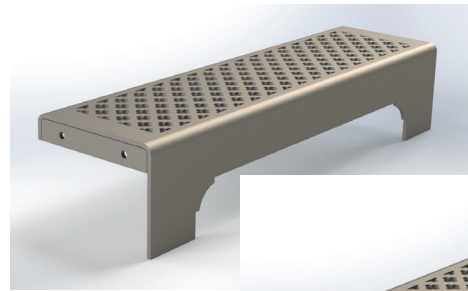
All quotations are for unfinished materials. All components can be painted to a quality external finish to match most Standard RAL colours at an extra charge.



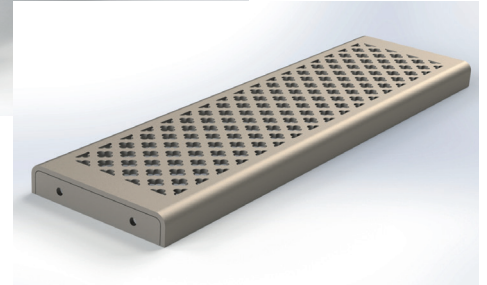
STAIRCASE BALUSTERS.



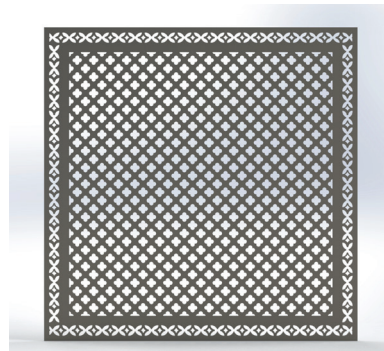
LANDING BALUSTERS.



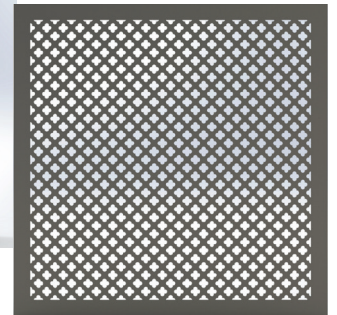
DT1QR.



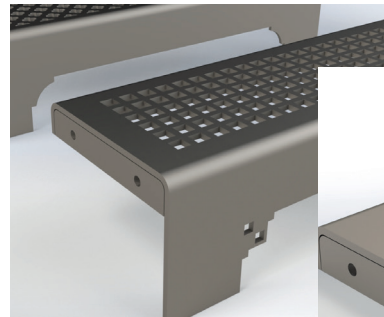
DT1QNR.



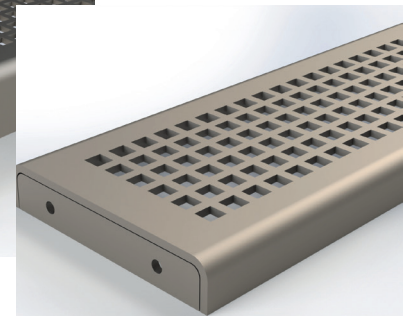
DT2WP.



DT2NP.



DT1-LCCR.



DT1LCCNR.



TRADITIONAL AND CONTEMPORARY STRINGERS.

Creative External Staircases

UK Creative Castings
Your complete staircase service

OUR SERVICES ARE AVAILABLE TO:

The Metalworker

Perfect for those with limited time or without access to CAD drawing software and/or design facilities.

The Architect

Design and drawings completed to specification by staff with over 40 years' experience in the design and manufacture of bespoke staircases.

The End User

Let us handle the complete process from complete package for you from survey and design through manufacture to final site Installation.

PLEASE NOTE: *Components can be painted to a quality external finish to match most Standard RAL colours at an extra charge.*

PLEASE ALSO READ OUR TERMS AND CONDITIONS

QUALITY STANDARDISED COMPONENTS FOR READY-TO-ASSEMBLE STAIRCASES

